

Designing Impactful and Engaging Enrichment Activities

Ken Anthony, CT After School Network
Katherine Ayers, Stratford Public Schools
Susan Schultz, Stratford Public Schools
Peggy Falcetta, Stafford Public Schools

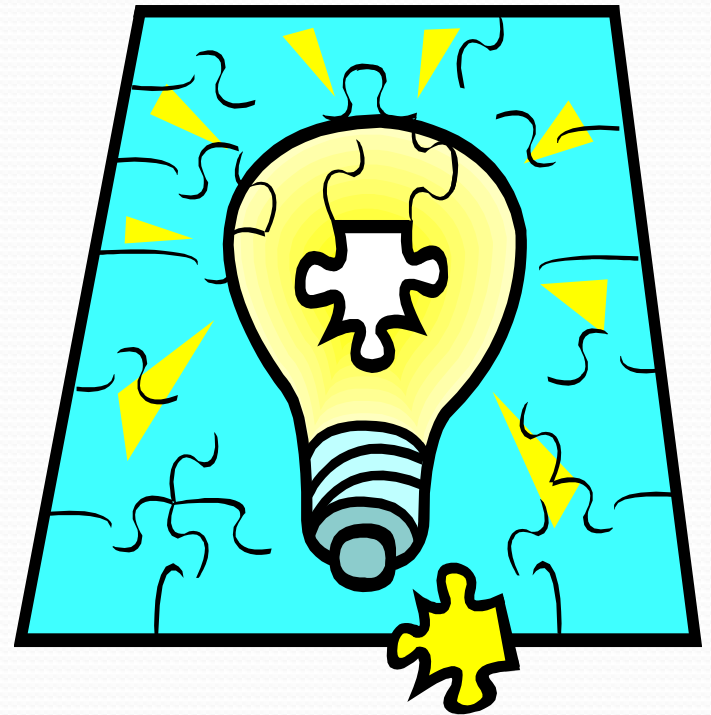
Who do we need in After School?



- Attentive to children
- Active engagement
- More than just “I love kids”
- More than just “Is it 6:00 yet”
- More than just “I wasn’t sitting”

The basics...

- Children are engaged when staff are engaged
- Staff are engaged when they care about what they are doing
- Engaging staff is the key to having a high quality program



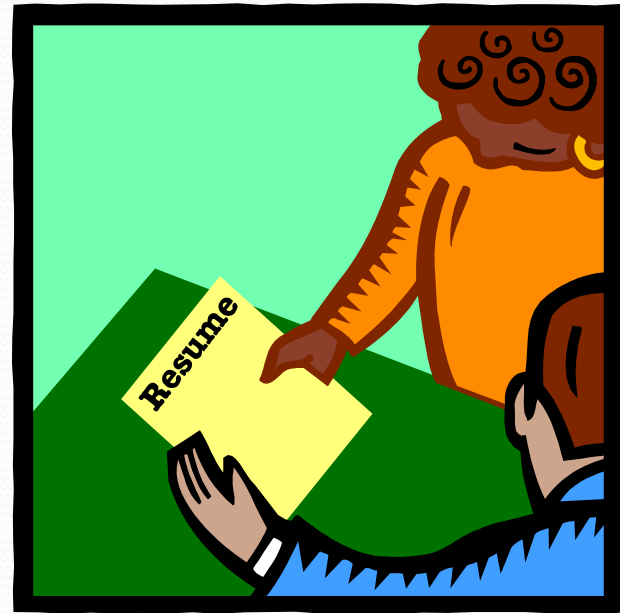
Do you know who *they* are?

- What do you think makes a good staff person?
- What makes this staff person memorable?
- What made you hire them in the first place?

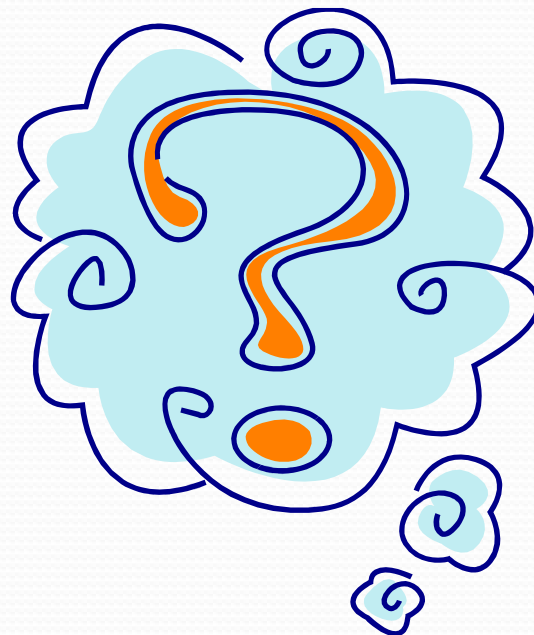


What does your program need?

- What does their resume look like?
- What is it you are looking for?
- Is there anything that stands out?
- How do you know who to interview?



Questions



Contact

Ken Anthony, Director of Professional Development

Connecticut After School Network (860) 730-2942

kanthony@ctafterschoolnetwork.org

Katherine Ayers, Stratford Public Schools CLASP Director

ayersk@staffordk12.org

Susan Schultz, Stratford Public Schools FLASH Director

schultzs@stratfordk12.org

Peggy Falcetta, Stafford Public Schools

falcettap@stafford.ctschool.net